

Wouldn't it be great if a company could take the hassle out of hazmon?



CMC Industrial Electronics can show you how.

■ RELIABLE

25,000 sensors installed worldwide, no false alarms

■ SCALABLE

Start small and add sensors as you grow

■ DURABLE

Designed and certified for use in hazardous locations

■ EASY TO INSTALL

All wiring components, software and mounting brackets are included

■ PROVEN TECHNOLOGY

Designed to run out of the box and with a wide range of sensors available



EZSentinel is your “HazMon in a Box” complete solution that is fully compatible for most types of machinery found in a grain processing facility. Everything needed for your installation is included in the kit: all components, brackets and wiring devices, right down to the screws and nuts, as well as instructional videos. There are three EZSentinel systems to choose from:

### EZSentinel Operator Interface Options

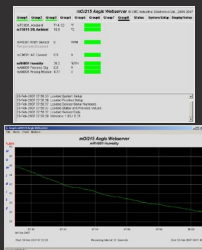
#### EZSentinel 128



#### OPERATOR INTERFACE/PLC COMBINATION COMPLETE SYSTEM IN A BOX

- NEMA4X double door enclosure, clear viewing door
- up to 128 sensors
- direct machinery control for 15 devices
- full graphical interface
- complete alarm system
- alarms logged to SD card memory
- sensor readings logged to SD memory
- remote web access

#### EZSentinel WS1

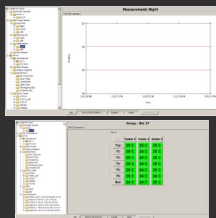


#### OPERATOR INTERFACE / WEB SERVER

- up to 256 sensors fully web enabled
- view on any PC without any installed software
- 4 alarms per sensor
- alarm and audible horn outputs
- e-mailed alerts
- up to 32 sensors can be logged simultaneously
- PLC ready with Modbus TCP/IP interface

#### EZSentinel WS2

COMING SOON



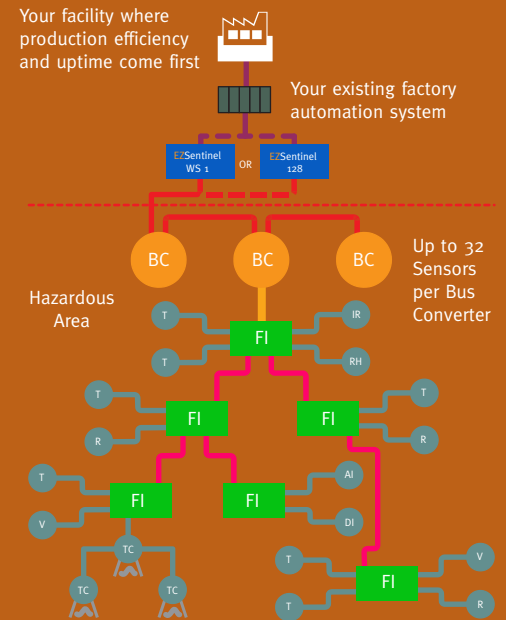
#### OPERATOR INTERFACE / WEB SERVER

- up to 512 sensors
- fully web enabled
- view on any PC without any installed software
- multiple alarms per sensor, including referential alarms
- remote alarm to printer or email over Ethernet
- PLC ready with Ethernet/ IP and Modbus TCP/IP interface

### EZSentinel Installation Kits

BUS CONVERTER KIT	1 BUS CONVERTER
BASIC CONVEYOR KIT / BUCKET ELEVATOR KIT	4 BEARING TEMPERATURE SENSORS 4 BELT TRACKING SENSORS 1 RPM SENSOR
ADDITIONAL IDLER KIT	2 BEARING TEMPERATURE SENSORS
GRAVITY TAKE UP KIT	6 BEARING TEMPERATURE SENSORS 2 BELT TRACKING SENSORS
DRAG KIT WITH RPM	4 BEARING TEMPERATURE SENSORS 1 RPM SENSOR
DRAG KIT NO RPM	4 BEARING TEMPERATURE SENSORS

Installation kits can be purchased and added to your EZSentinel system to suit your facility



#### LEGEND

- Modbus TCP/IP Network
- Modbus RTU RS-485 2 pair shielded cable
- 1-Wire® Network CAT5 Cable any style
- Thermocouples 21 or 168 wires
- EZSentinel 128 HMI/PLC or EZSentinel WS1 Web Server
- Bus converter (BC) complete with 1 m of cable and RJ-11 plug
- NEMA4X enclosure Field Interconnects (FI)  
3 - 110 punch-down terminals  
4 or 6 RJ-11 sensor jacks
- Analog In (0 - 10V, 4 - 20mA)
- Digital In (4 points, dry contact)
- Infrared Temperature
- Relative Humidity
- Rotation Sensor (RPM) (complete with free hanging weatherproof enclosure)
- Temperature (Digital sensor)
- Temperature Thermocouple (21 or 168 channels, includes field interconnect)
- Vibration (Peak and RMS)